

The Good, The Bad and The Ugly of AI for IoT and Sensor Network

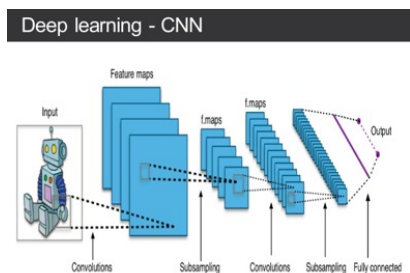
Professor

Department of Information Engineering

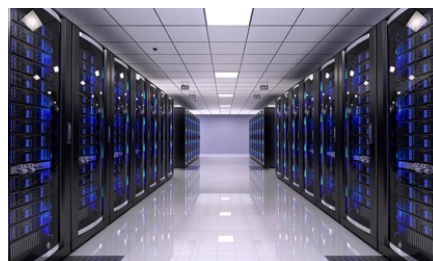
The Chinese University of Hong Kong

Today's AI Applications: Vision/NLP

IMAGENET



Algorithms

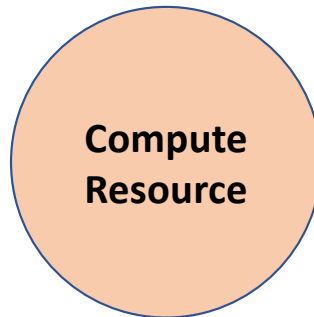
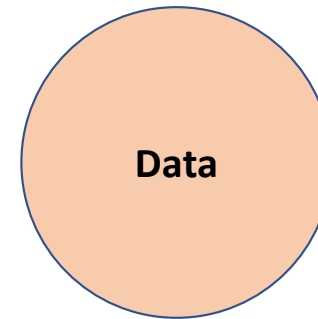
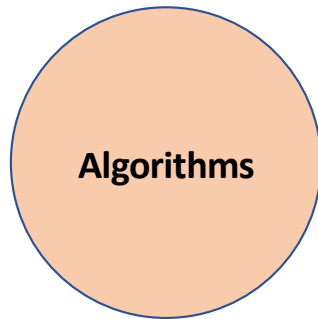


Compute Resource

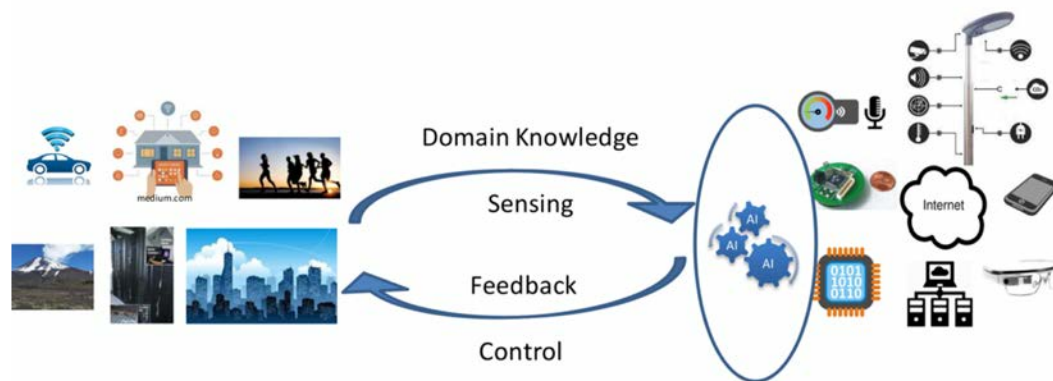
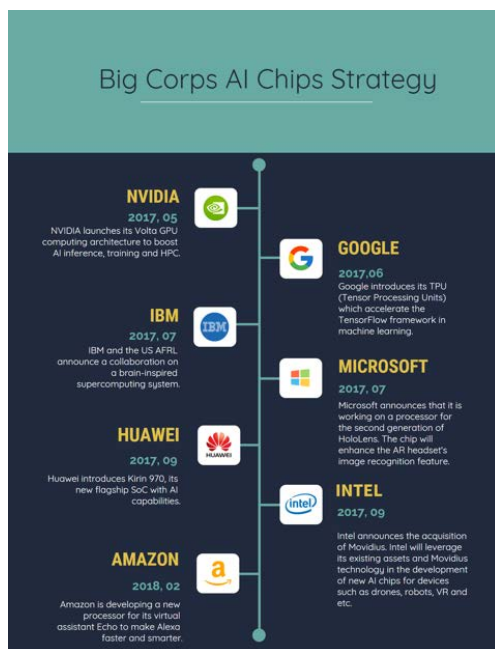


Data

What about IoT

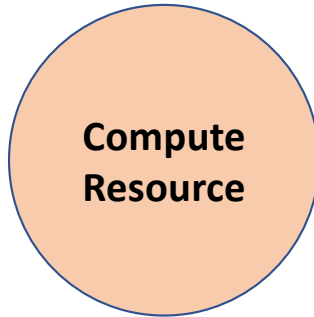
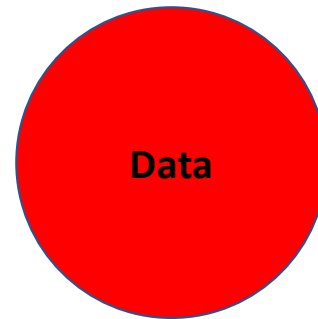
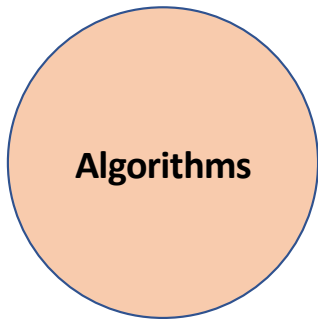


AI Accelerator + Edge/Fog Computing



<https://medium.com/syncedreview/tracking-the-transforming-ai-chip-market-bac117359459>

What about IoT



Data Labeling

5

The New York Times

THE NEW NEW WORLD

How Cheap Labor Drives China's A.I. Ambitions



Workers at the headquarters of Ruijin Technology Company in Jiaxian, in central China's Henan Province. They identify objects in images to help artificial intelligence make sense of the world.
Yan Cong for The New York Times

Readers in Canada subscribe for \$2 (Cdn) a week.

SUBSCRIBE

Q Search

Bloomberg

58

Technology

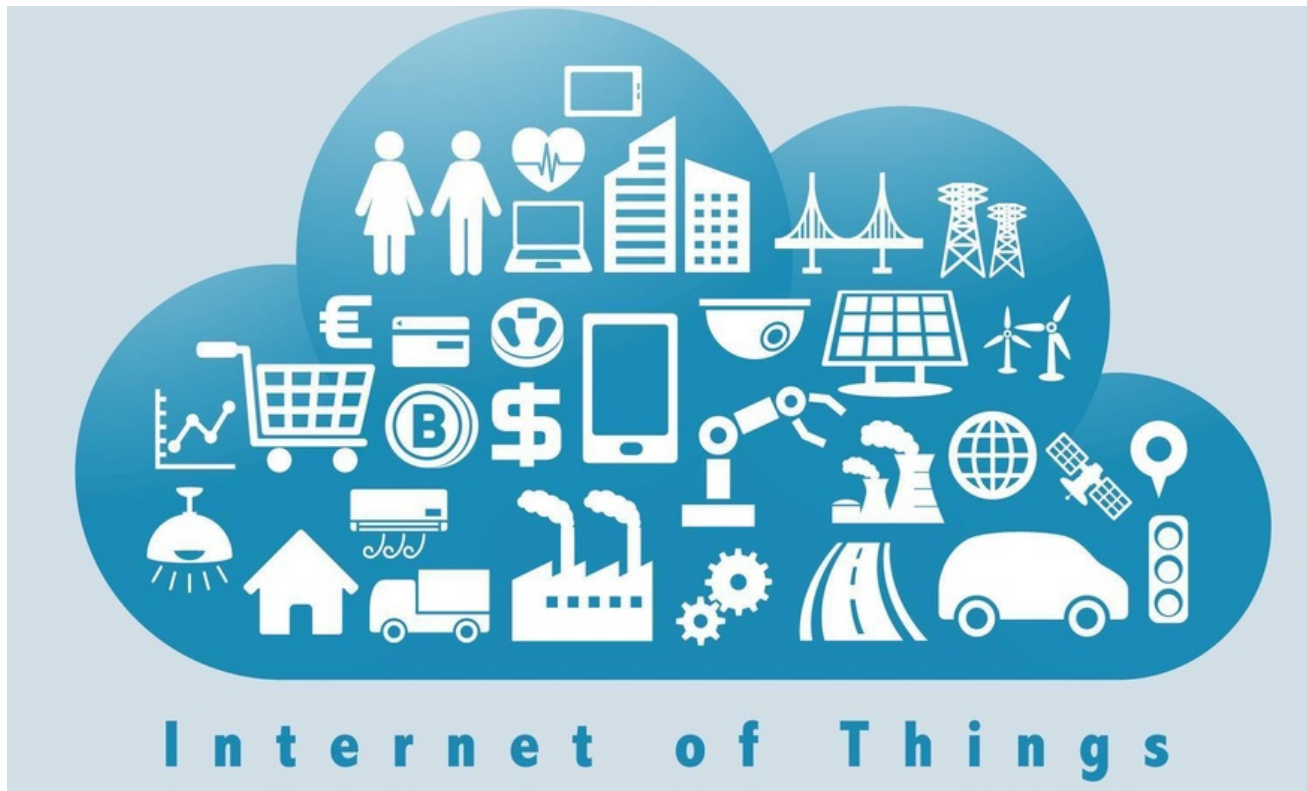
Amazon Workers Are Listening to What You Tell Alexa

A global team reviews audio clips in an effort to help the voice-activated assistant respond to commands.

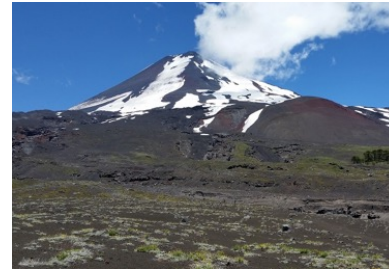
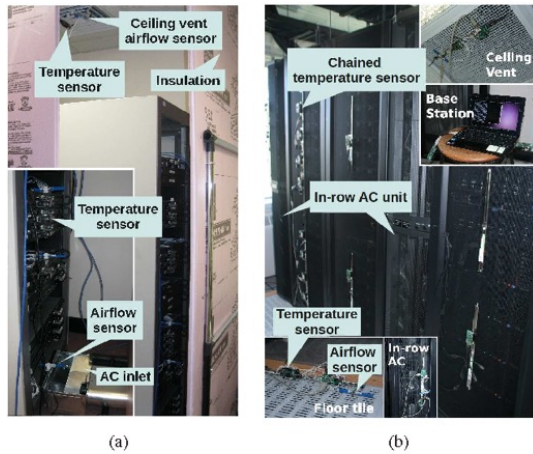
By Matt Day, Giles Turner, and Natalia Drozdiak
April 10, 2019, 6:34 PM GMT-4



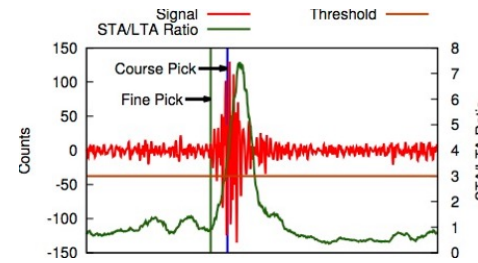
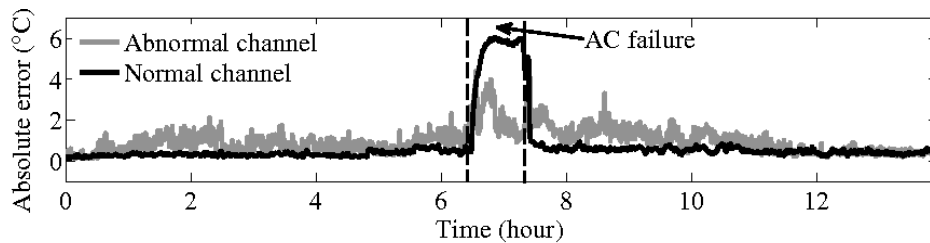
Data Labeling?



Physical Uncertainty



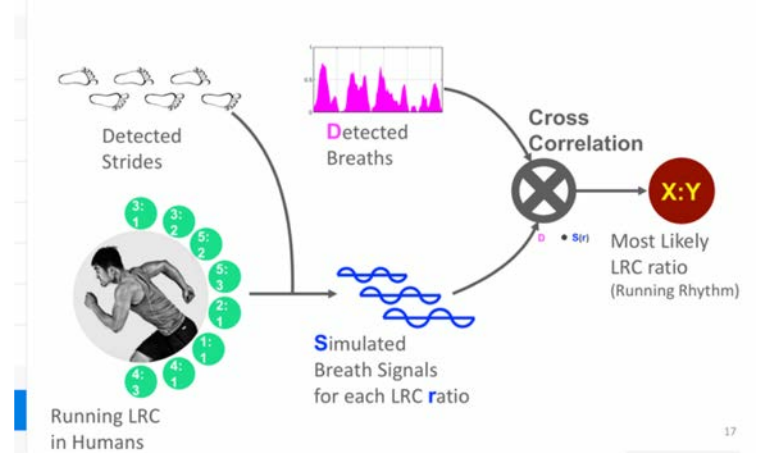
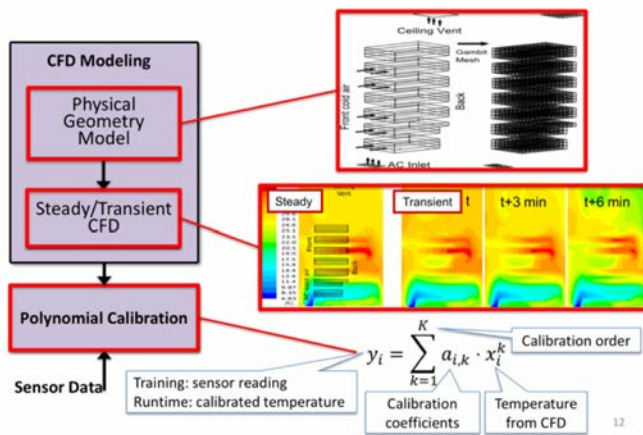
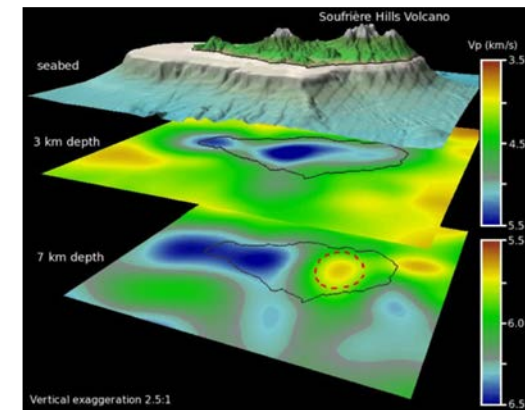
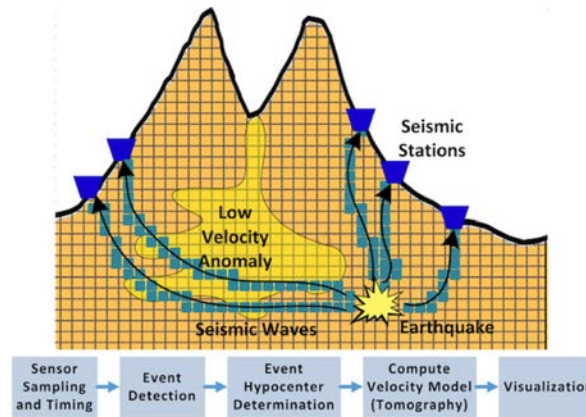
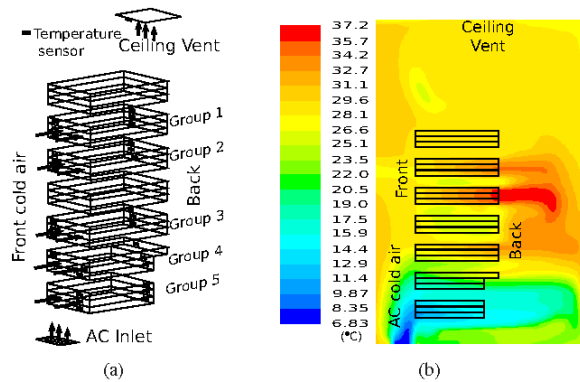
Llaima Volcano deployment, Chile, 2015



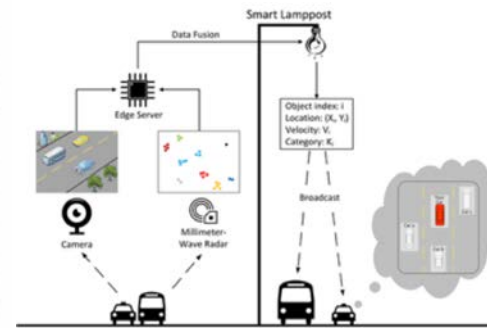
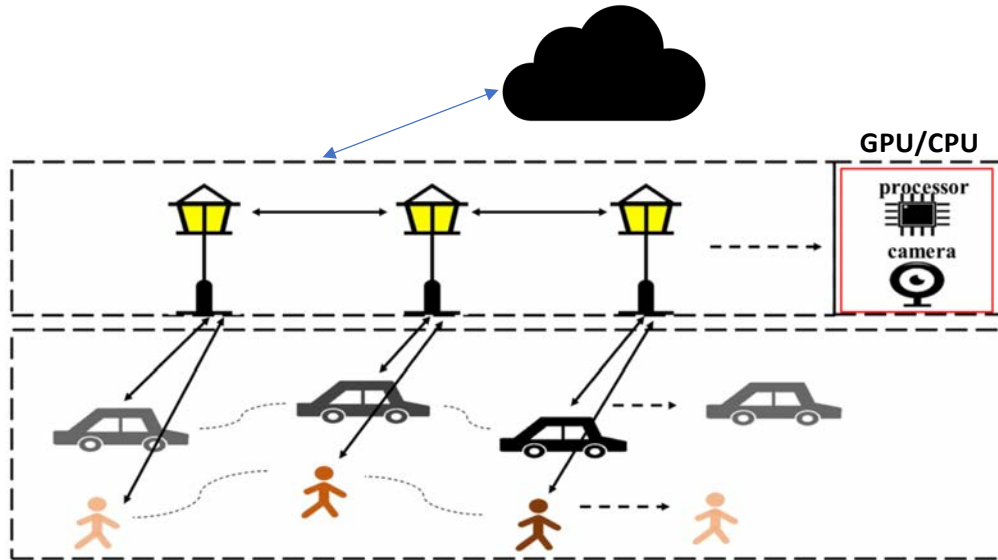
provided by Alfonso Villa

Fig. 15. A typical example of a false alarm in the detection of an AC failure.

Incorporating Domain Knowledge in ML

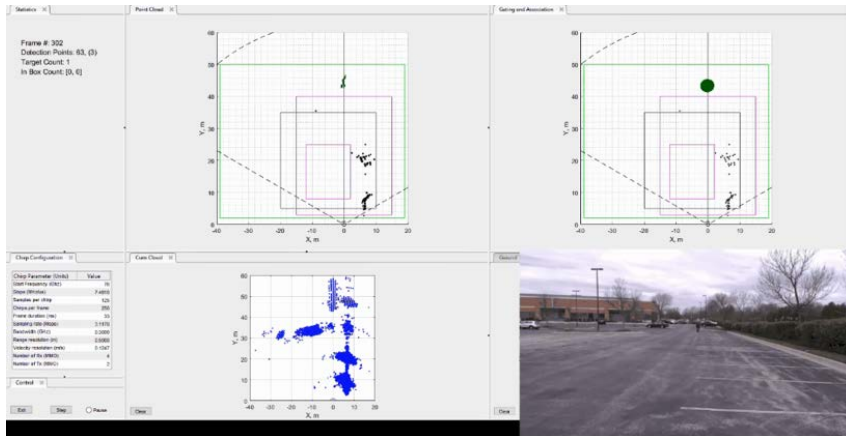
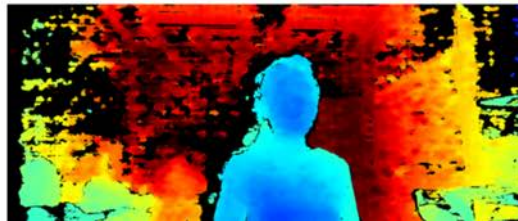


Smart Lampposts



- 140K lampposts X 10 fps X 7 X 24 X 3600

Multi-Sensor Fusion



Texas Instruments

